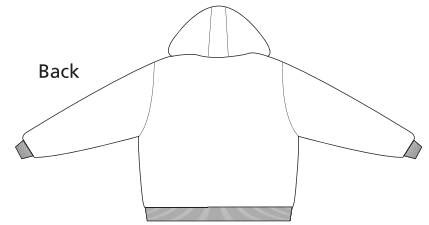
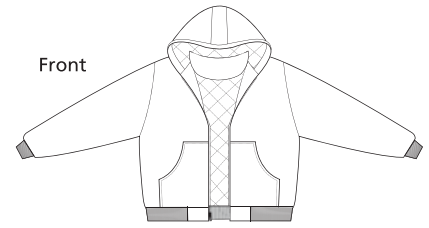


Hooded Work Jacket



J763H

- * 12-ounce * 100% heavyweight cotton duck cloth * 6-ounce polyfill nylon lining
- * Hood with dyed-to-match drawstring * Rib knit cuffs and hem; muff pockets
- * Port Pocket™ for easy embroidery on left chest and back

Care Instructions:
 Machine wash cold. Do not bleach.
 Tumble dry low. Remove promptly.
 Cool iron if necessary.
 Do not dry clean if printed.

Finished Measurements in Inches										
Size	XS	S	M	L	XL	2XL	3XL	4XL	5XL	6XL
Chest	22	23.5	25	26.5	27	29.5	31	32.5	38.25	39.75
Length	24.5	25	25.5	26	27.5	28	29	29.5	31	32
Sleeve	31	33	34.5	35.5	36	36.5	37	37.5	39.5	40
Sweep	20.5	21.5	22.5	23.5	24.5	25.5	26.5	27.5	34.75	36.25
Areas for Decoration	Left Chest, Full Back			Port Pocket™			Left Underarm, Bottom Back Hem			

Chest width measured 1" below arm hole.
 Body length measured from back neck seam to hem. Sleeve length measured from center back seam to hem.

Colors	
	Black
	Duck Brown
	Navy/Black

Please Note:
 Colors shown are approximate and for reference only. For closest match see PMS colors, or for exact match, returnable samples and grommeted samples are available.

Color Chart			
Color	Black	Duck Brown	Navy
Textile PMSf	19-4203TC	18-0933TC	19-4010TC
General PMS	Process Black	464C	532C